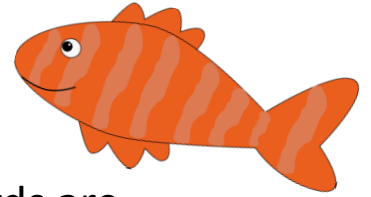




Go Fish For Silent E

Objective: To match short vowel CVC words with long vowel CVCe silent e words.



How to Play:

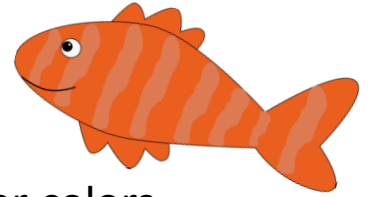
1. Each player takes four cards. The rest of the cards are placed face down to make a draw pile.
2. Each player looks at his or her cards and matches cards to make pairs. (cub & cube, etc.) Players lay their pairs faceup and hold the remaining cards.
3. Player 1 asks for a card that matches one in his/her hand. (If the player is holding *hid*, he or she might ask, “Does anyone have *hide*?”)
 - If another player has the requested card, it is given to Player 1. The first player then places the two matching cards faceup with any other pairs and gets to ask again.
 - If no other players have the requested card, they say, “Go Fish.” Player 1 draws a card from the draw pile. If the card makes a match in his/her hand, the player lays the two cards faceup with the other pairs. If the card doesn’t match, the player keeps it in his/her hand. Play moves to the second player.
4. Player 2 then takes a turn asking for a match to a card in his/her hand. Play continues around the circle until all matches are made.
5. If a player runs out of cards by making matches, the player may draw a card from the draw pile to have at least one card in his/her hand.
6. The player with the most matches wins.





Go Fish For Silent E

Objective: To match short vowel CVC words with long vowel CVCe silent e words.



How to Make the Game:

1. Copy each page of words onto cardstock. Lighter colors like yellow and white may show the word through the card. You can print a pattern of shapes, plaid, etc. on the back of the page to prevent students from seeing the words through the cards.
2. Cut pages into quarters.
3. Laminate for durability.
4. For multiple sets you can copy each game on a different color or with a different pattern on the back of each card.
5. Each card set will fit in a quart sized plastic bag.



bit

bite

cap

cape

cub

cube

cut

cute

fin

fine

hat

hate

hid

hide

hop

hope

kit

kite

mad

made

rat

rate

rid

ride

rob robe

mat mate

not

note

pan

pane

pet Pete

rod rode

pin

pine

tub

tube