

Start Smart Week 2 Lesson 4

Circle the first letter
and the end
punctuation mark of
each sentence.

Track the print as you read the Daily Warm-Up.
Read sentences and invite children to chime in.

Point to the first and
last words in each
sentence.

“Look at the frog,” I said.

“It has red eyes!”

“Is it a tree frog?”

Circle the quotation
marks in the first
sentence.

Quotation Marks tell the exact words
that someone says.

Remember that a sentence begins with a capital letter and ends with a punctuation mark.

Have partners ask about frogs. Where might you see frogs and what do frogs look like?
What do you think a tree frog is?

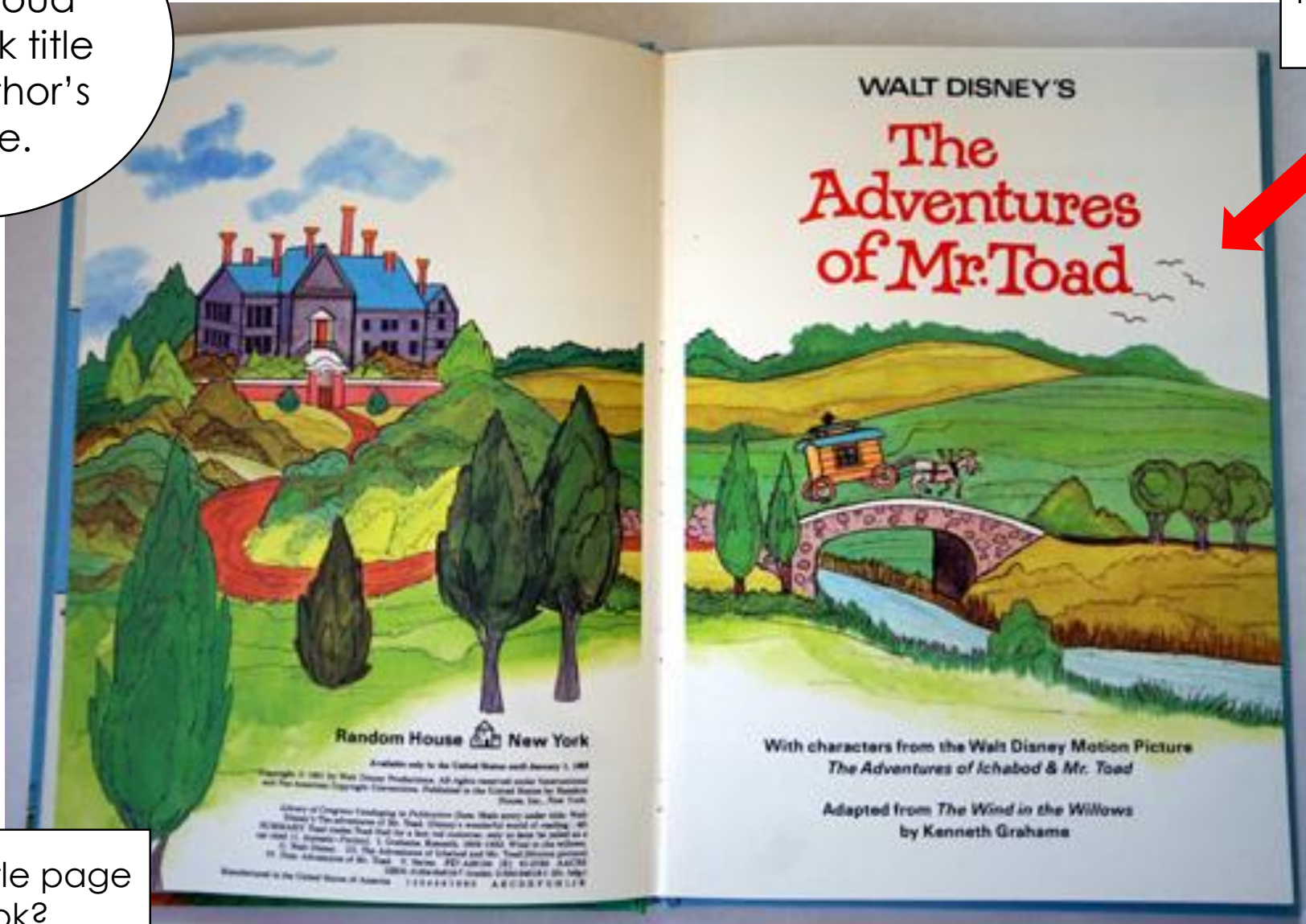


Red Eyed Tree Frog

Concept of Print

Point to and read aloud the book title and author's name.

This is the Title Page.
This page has the name of the book and the author.



Where is the title page in the book?

“Let’s Explore!”

Listening Comprehension



Informational Text:

1. Gives facts about real people, places, animals, or events.
2. Includes details that give important information.

The title of a selection can help us figure out what the selection might be about. I think we will explore, or find out more about, something or some place in this selection.

START SMART

Details give important information. They can describe a place and what grows or lives in that place. Listen for important details about places.

Rereading can help you understand details in a text. As you listen to me read, you can ask me to stop, go back, and reread to help you remember or understand details.

“Let’s Explore!”

Plants and animals make their homes in many different places. Let’s explore some of them.

Prairie

Picture a land covered in grass. There is grass all around. In some places, the grass is as tall as a person!

The weather is usually hot in summer and cold in winter. The tall-grass prairie has good soil and gets enough rain for plants, such as wheat and corn, to grow. Many animals live in the prairie. There are birds, insects, and mammals, such as rabbits, foxes, deer, and prairie dogs.

Prairie dogs aren’t dogs. They’re actually ground squirrels that live in underground homes. They’re called dogs because they make barking sounds!

Tundra

Now imagine a place that’s cold and frozen most of the time. There is ice and snow for miles around. The word *tundra* means “treeless land.”

Although the tundra is treeless, plants grow there. In summer, the top layer of the tundra melts. Pools of water form, and shrubs and grass grow. Few animals

live in the tundra because it’s so cold. However, reindeer, Arctic foxes, polar bears, and snowy owls make their homes there.

Many animals hibernate during the long, cold winter. During the short, cool summer, they give birth to their young. Living in the tundra is hard, but some animals manage to survive in this cold land.

Rain Forests

Birds squawk, monkeys screech, and tree frogs call. The air is hot. It is raining. Tall trees soar high above your head. You’re in a rain forest.

A rain forest grows in layers. The bottom layer is the forest floor. Many animals live there, especially insects. Above the forest floor, shrubs and small trees grow. The next layer, near the top, is a leafy green canopy of treetops. This canopy is filled with more animals. Finally, giant trees tower over the whole forest.

Rain forests grow all over the world and have more kinds of trees than any other place on Earth. Millions of animals live there, such as colorful butterflies and birds, as well as monkeys, snakes, and jaguars.

What is the land in a prairie covered with?

Is the summer hot or cold?

Do wheat and corn grow in a prairie?

What animals live there?

Prairie



Tundra



Rain Forest



Shared Writing

Write the sentences and reread them together.

Name plants and animals that live in each place, according to "Let's Explore"

Prairie	Tundra	Rain Forest

An animal in the _____
is _____. A plant in the
_____ is _____.

An animal in the _____
is _____. A plant in the
_____ is _____.