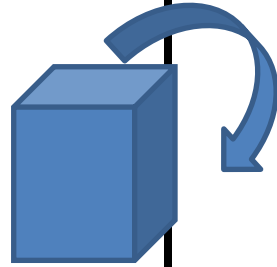


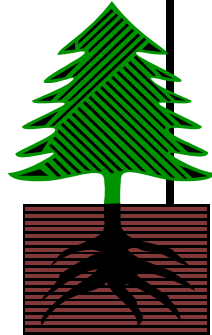
aside



to one side

8.1-8.5

root



bottom where  
something starts

8.1-8.5

quite

very

8.6-8.10

shout



yell loudly

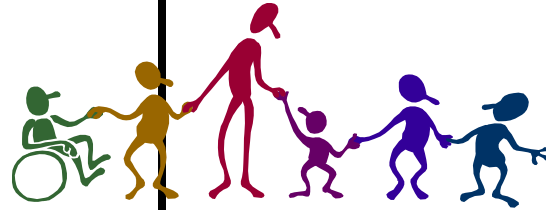
8.6-8.10

flower



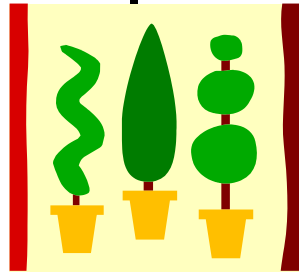
blossoming part of a  
plant

tight



firm

shrub



small bush

stem



stalk of the flower

vine



a long stem growing on the ground or up a wall

8.11-8.15

energy



strength to do something

8.11-8.15

soggy



very wet with liquid

8.11-8.15

petals



colored leaves of a plant

8.16-8.20

bright



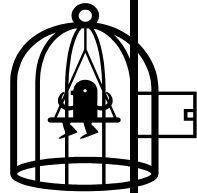
colorful

tuck



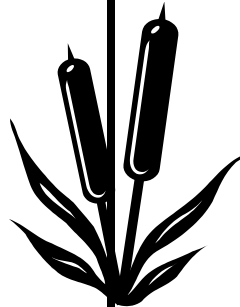
put in small place or  
put in lose end

trap



catch, let in but not  
out

wetlands



land made of wet  
marsh or swamp

attract



draw attention to

insect



bug with 6 legs, 3 body  
parts, no backbone